



TRAVEL TO BHUTAN

"We plan, you relax."

Get in Touch: +91 73846 42857 | +975 1750 5195



BHUTAN SOLO TOUR ITINENARY



6 Nights - 7 Days



Day 1 Arrival & Exploration

ARRIVAL IN BAGDOGRA AND TRANSFER TO PHUENTSHOLING TRAVEL TIME: AROUND 6 HOURS, 145 KMS.

You'll start your journey in Bagdogra, India, and cross the border into Bhutan to reach Phuentsholing. This day is primarily for travel, with the evening available for you to explore Phuentsholing. You'll stay overnight in Phuentsholing.



Day 2 Sight Seeing Immersion

PHUENTSHOLING TO THIMPHU WITH ROAD SIGHTSEEING TRAVEL TIME: AROUND 5 HOURS, 160 KMS.

After breakfast, you'll embark on a road trip from Phuentsholing to Thimphu, the capital city of Bhutan. Along the way, you'll have the opportunity to enjoy scenic views of the Himalayan mountains and the Bhutanese countryside. Upon arrival in Thimphu, you'll check into your hotel. If time allows, you can explore the local markets or simply relax in Thimphu. You'll spend the night in Thimphu



Day 3 Exploration

**THIMPHU TO PUNAKHA TRAVEL TIME:
AROUND 2 HOURS, 73.3KM.**

This day involves a journey to Punakha with some sightseeing stops on the way, including Dochula Pass. In Punakha, you'll visit Punakha Dzong, Suspension Bridge and explore local attractions. In the evening, you'll return to Thimphu. You'll stay overnight in Thimphu.



Day 4 Sight Seeing Immersion

**THIMPHU SIGHT SEEING - STAY PARO
TRAVEL TIME: AROUND 1:30 HOURS, 50 KMS**

You'll spend the day exploring Thimphu's attractions, which include Buddha Dordenma, Tashichho Dzong, National Memorial Chorten and Simply Bhutan. Optional visits to the Takin Preserve or the Folk Heritage Museum can also be considered if time allows. In the evening, you'll drive to Paro. You'll stay overnight in Paro.



Day 5 Exploration

HIKE TO TIGER'S NEST - HIKE TIME: AROUND 4-5 HOURS, ALTITUDE: 10,245 FT, 6.4 KMS

This day will begin with an early breakfast. You'll embark on a challenging but rewarding hike to the iconic Tiger's Nest Monastery. You'll have sample time to explore the monastery. Here you can focus on meditation in the most relieving and free environment. Hot Stone Bath after the hike. In the evening, you'll return to Paro. Your overnight stay will be in Paro.



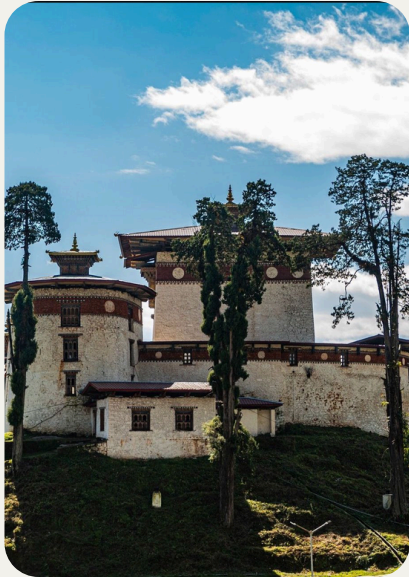
Day 6 Sight Seeing Immersion

PARO TO PHUENTSHOLING TRAVEL TIME: AROUND 5 HOURS, 148 KMS

After breakfast, you'll drive back from Paro to Phuentsholing. Upon reaching Phuentsholing, you'll check into your hotel. This day allows you to relax or explore the town at your own pace perhaps for souvenir shopping or savoring local cuisine in Phuentsholing. You'll spend the night in Phuentsholing.



TRAVEL TO BHUTAN



GASA DZONG

Day 7

Exploration

**Transfer Bagdogra Airport Travel Time:
Around 6 Hours, 145 KMS**

On the final day, after breakfast and check-out from your hotel in Phuentsholing, you'll be transferred to Bagdogra Airport for your departure.



THE BUDDHA DORDENMA STATUE



RIMPUNG DZONG



**THIMPHU TSHECHU -
13TH - 15TH SEPTEMBER**



LOCAL CUISINE



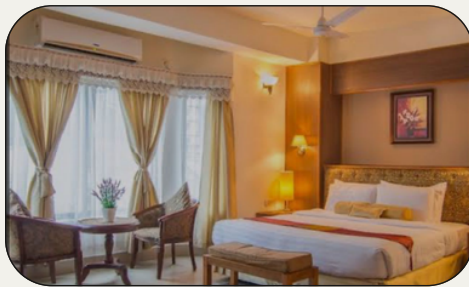
HANDCRAFT MARKET



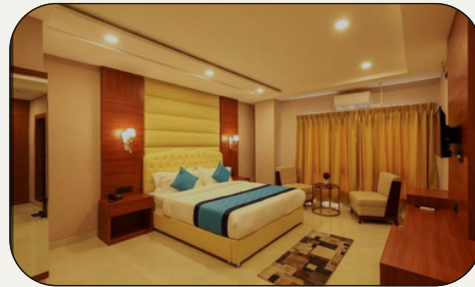
Accommodation Provided in 3 Stars Hotels

Meal - Breakfast & Dinner (Complimentary)
Room Type - Twin sharing or Queen Size bed

PHUENTSHOLING (2 NIGHTS)

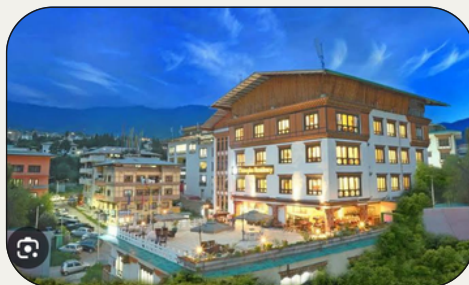


METO PEMA



LAKHI HOTEL

THIMPHU (2 NIGHTS)

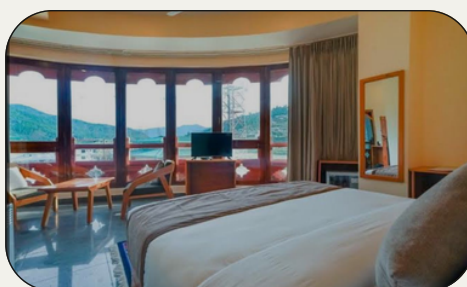


THIMPHU RESIDENCY



ORA VILLA

PARO (2 NIGHTS)



GAKYIDIANA



UDUMWARA RESORT



TRAVEL TO BHUTAN

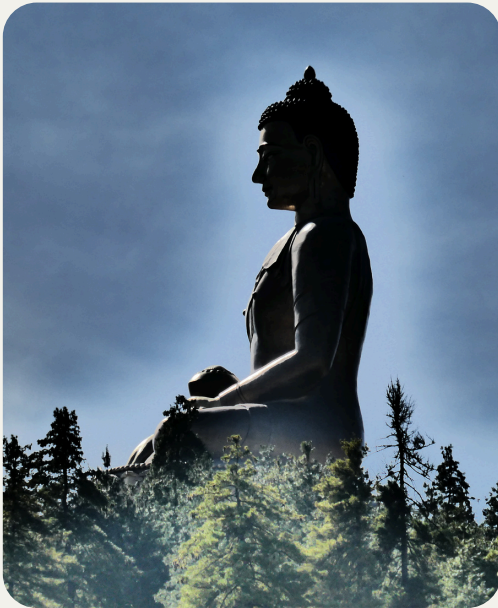


Inclusion

- **Accommodation** on twin sharing basis in the above mentioned or any similar hotels
- **Meals:** Breakfast & Dinner
- **Sightseeing** as mentioned in the itinerary
- English speaking guide
- **BHUTAN SDF FEES (1200/-pp)**

Exclusion

- Air fare/Train fare
- Sightseeing Entrance fees
- Soft drinks, Room heaters, laundry charges, local taxi fare
- Medical & Emergency costs due to illness, natural calamities etc.
- Lunch



CLOSING DAYS OF CERTAIN MONUMENTS

- **National Library – Thimphu:** closed on Sat, Sun & Government Holidays.
- **Folk Heritage Museum - Thimphu:** closed on Government Holidays and on Sat open from 10.30 am to 1.00 pm and on Sun open from 11.30 am to 3.00 p.m.
- **Textile Museum – Thimphu:** Closed on Government Holidays and on Sun and on Sat open from 9.00 am to 4 pm.
- **Institute of Zorig Chusum (Arts & Crafts School) - Thimphu:** Closed on Sun & Government Holidays and on Sat open from 10 am to 12 o'clock.
- **Ta Dzong (national museum) – Paro:** closed on Government Holidays.



Package Cost

Total Cost for Your Trip

- 7 days & 6 nights
- 65,000 INR per person
- Bagdogra Airport, West Bengal

Explore Bhutan with flexible travel options: group, solo, or customized. Pure vegetarian meals available upon request



Payment & Cancellation Policy

- INR 5000 Per Person payment is to be made for booking confirmation and Remaining amount shall be Paid on the date of arrival here at Bhutan.
- Booking confirmation will be sent within 24 hours.
- No cancellation and refund will be allowed where less than 30 days are left before journey.
- 75% refund will be allowed if booking is cancelled on or before 30 days before journey.

Account Holder: Simran Agarwal
Account Number: 34909335581
IFSC: SBIN0006278
Branch: Jaygaon Account
Type: Saving



Payment & Cancellation Policy

- INR 5000 Per Person payment is to be made for booking confirmation and Remaining amount shall be Paid on the date of arrival here at Bhutan.
- Booking confirmation will be sent within 24 hours.
- No cancellation and refund will be allowed where less than 30 days are left before journey.
- 75% refund will be allowed if booking is cancelled on or before 30 days before journey.



Account Holder: Simran Agarwal
Account Number: 34909335581
IFSC: SBIN0006278
Branch: Jaygaon Account
Type: Saving